



blue bells  
care

hospital & general supplies

*Committed to quality, committed to you!*



# Blue Bells Care Ltd. Company Profile

[www.bluebellscare.com](http://www.bluebellscare.com)



# About Blue Bells Care Ltd.

Blue Bells Care Limited (BBCL) is a Private Limited Company registered under the laws of Kenya in 2013 and specializes in both hospital supplies and general supplies. With its headquarters in Nairobi, it serves both the local and East African region.

Blue Bells Care brings a fresh and innovative approach to product distribution, sales and marketing, acting as liaison between the end-user and the manufacturer. The company's core business is in the marketing/sales of medical devices and services related to ostomy, urology, continence and wound treatment.

*Your trusted medical supplies  
service provider since 2013*

We are committed to delivering high quality and reliable products and services that meet our customers' needs. Our holistic approach to quality-permeates every aspect of the company's supply chain from process, technology and design through manufacturing, packaging, test and delivery.



# Our MISSION

*Committed to quality, committed to you!*

# Our VALUES

**Closeness:**

*To better understand*

**Passion:**

*To make a difference*

**Respect & Responsibility:**

*To guide us*

# Our VISION

*Setting the standard for listening  
And responding.*

# Our Associates

Our associates are distinguished by their functional and technical expertise combined with their hands-on experience, thereby ensuring that our clients receive the most effective and professional service and products.

They are also well versed in all aspects of multiple location management, from budgeting to productivity to establishing and maintaining business partnerships.

*Your trusted medical supplies  
service provider since 2013*



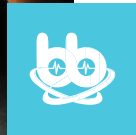
# Our Team

Our extensive skills encompass all aspects of implementation and operation, including business requirements definition, development of functional specifications for client approval, and overseeing development, customizing products to fit specific client needs. It is a combined working experience of 20 years.

Typically, we are on-site at the clientele locations handling client contact, providing functional and technical training and support, and resolving any and all issues that arise when the client initiates product usage in a live setting.

*Committed to quality,  
Committed to you!*

This is due to effectively directing team members to ensure that all business requirements are met within budget and time schedules.



# Our Clientele

In order to meet the individual needs of clients, Blue Bells Care maintains a wide range of qualifications. Our extensive knowledge base entails, product merchandising through purchase orders to planning and finally allocating to clients throughout various locations.

Our clientele include Hospitals, nursing homes and clinics both private and public, private and public institutions, NGO's and individuals.

In summary, exceptional functional and technical expertise coupled with extensive industry knowledge makes Blue Bells Care your true business partner to cater for all your medical supplies needs.

*Your one-stop-shop for ostomy, urology,  
continence and wound treatment.*



# Our Products Catalogue

## Ostomy Care Bags & Accessories

We provide safe ostomy bags and accessories tailored to your specific needs.

Samples Available



## Tubing & Masks For Medical Use

We offer surgical suction tubing includes connecting tubing, bubble tubing and tubing connectors.

Samples Available



## Protective Gears PPEs: Gowns, Apron

We provide protective clothing for the eyes, head, ears, hands, respiratory system, body/feet.

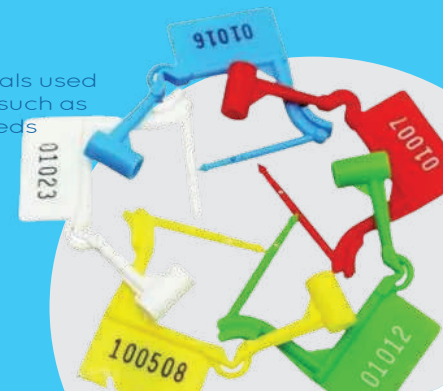
Samples Available



## Security Seals Trolley Seals

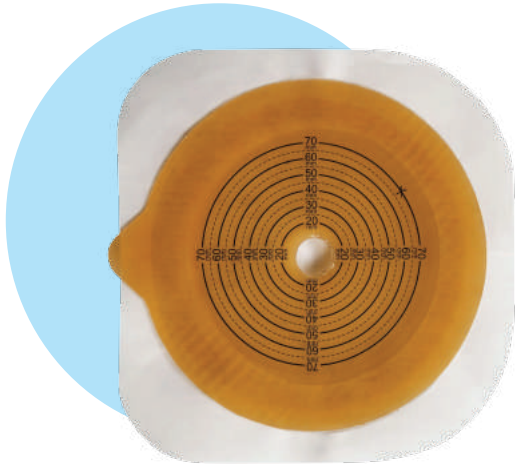
The range of security seals used for diverse applications such as sealing medical carts, beds

Samples Available



For more information visit our website: [www.bluebellscare.com](http://www.bluebellscare.com)

# Our Products Ostomy Care



## Baseplate

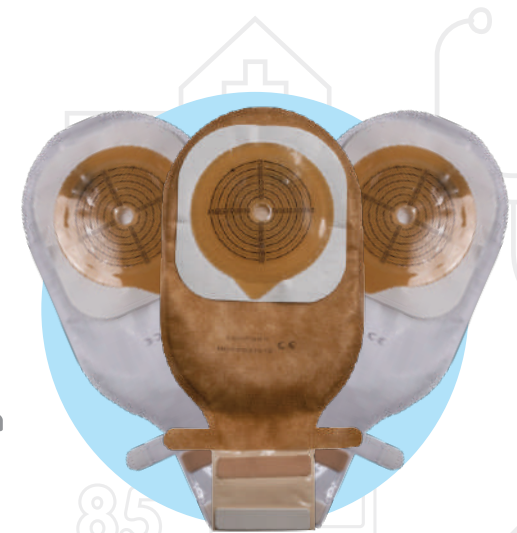
People with artificial bowel or bladder outlets rely on base plates. These mostly round shaped accessories are the connector between body and stoma bag.

**Color:** White | **Brand:** Confort | **Size:** 70mm / 100mm

## One Piece Bags

Comfortable Use with Non-Perspiration Exterior Surface with Specially Designed 5 Layered Film, Liquid and Odor Tight. Available in Opaque & Transparent Color Range.

**Color:** Brown / White | **Brand:** Confort | **Size:** 70mm / 100mm



85  
[www.bluebellscare.com](http://www.bluebellscare.com)



# Our Products Ostomy Care



## One Piece (Neonatal Bag)

Comfortable Use with Non-Perspiration Exterior Surface – With Specially Designed 5 Layered Film, Liquid and Odor Tight. It is designed for babies.

**Color:** White / Clear | **Brand:** Confort | **Size:** 40mm

## One Piece (Pediatric Bag)

Comfortable Use with Non-Perspiration Exterior Surface Specially Designed 5 Layered Film, Liquid and Odor Tight. It is designed for children and babies.

**Color:** Brown / White | **Brand:** Confort | **Size:** 45mm



# Our Products Ostomy Care



## Two Piece (Ostomy Bag)

Comfortable Use with Non-Perspiration Exterior Surface – With Specially Designed 5 Layered Film, Liquid and Odor Tight.

**Color:** White | **Brand:** Confort | **Size:** 70mm / 100mm

## Two Piece Bags

Comfortable Use with Non-Perspiration Exterior Surface – With Specially Designed 5 Layered Film, Liquid and Odor Tight. Available in Opaque & Transparent Color Range.

**Color:** Brown & White | **Brand:** Confort | **Size:** 70mm / 100mm



# Our Products Ostomy Care



## Adhesive Remover Spray

Provides easy and gentle removal of ostomy bags and other adhesive dressings. Prepares the skin for implementation of a new bag system.

**Color:** Clear | **Brand:** Confort | **Weight:** 50ml

## Stoma Powder

Minimalize skin eruption. Absorb the moisture around the stoma. Helps the ostomy bag adhere properly. Keeps the skin dry.

**Color:** White | **Brand:** Confort | **Weight:** 71g



# Our Products Ostomy Care



## Stoma Paste

Used to Prevent Leakage. - Easy Implementation and Shaping with Special Formula. Extent the usage of Ostomy Systems, Skin-friendly, Quick-dry.

**Color:** White | **Brand:** Confort | **Weight:** 60g

## Ostomy Belt

Ostomy Belt Keeps the Bag in Place and Gives Patient Confidence. Stomy Belt Keeps the Bag in Place and Gives Patient Confidence.

**Color:** White | **Brand:** Confort | **Size:** 100 - 120cm



# Our Products **Personal Protective Equipment**



## Thumb Loop CPE Gown

The CPE gown are more widely used recently as a part of accessories to normal apparel or uniforms to provide extra protection against fluid or dirt.

**Color:** Blue / Clear | **Brand:** Boenmed | **Weight:** 55g  
**Size:** 60x106cm / 122x206cm

## Disposable Plastic Apron

The plastic apron is made of polyethylene LDPE, HDPE and LLDPE. It can be used for laboratory testing, industrial and agricultural protection, nursing, etc. Water/dust proof.

**Color:** White / Clear | **Brand:** Boenmed | **Size:** 90x150cm / 75x131cm, **Thickness:** 0.008mm – 0.045mm, **Weight:** 17g / 25g



# Our Products **Tubing & Masks**



## Bubble Suction Tubing

Made of medical PVC. Specifications: Made of medical PVC- Transparent, kink-resistant. Dimensions from 1.3mm to 14.0mm.

**Color:** Clear | **Brand:** SUMI | **Size:** 30cm

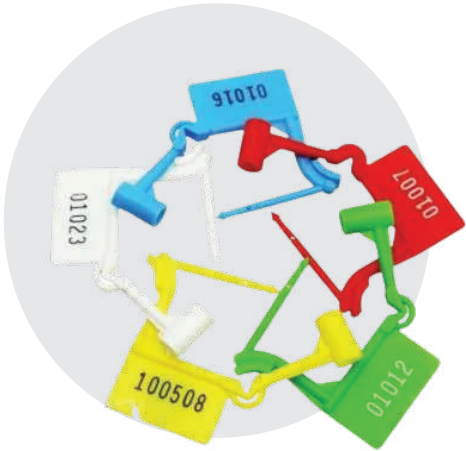
## Disposable Anesthesia Masks

Our range of Anesthetic Face Masks include inflatable and non inflatable, cuffed, molded for both adult and paediatrics patients.

**Color:** Clear | **Brand:** SUMI | **Size:** 1, 2, 3, 4, 5



# Our Products Security Seals



## Emergency Trolley Seals

Straight, thin locking arrow applies with one hand and fits most latch mechanisms. Designed for reliable, cost-effective tamper-evidence and quick access.

**Color:** Red / Blue / Green | **Brand:** TydenBrooks  
**Type:** Individually serialized

# FAQ BBCL

## 1. Can I try out a product or equipment before buying it?

We do have demos of some medical equipment items in store and also offer product samples at competitive prices, you can try before you buy.

## 2. What are your hours of operation?

Our offices are open Monday-to-Friday from 8AM to 5PM

## 3. Do you deliver?

Yes, same day delivery for Nairobi County and next day for upcountry. For East Africa we can make arrangements.

A delivery fee is charged depending on the clients location. For more information please contact our office.

## 4. What region(s) do you service?

We are able to service Nairobi and surrounding area, upcountry and East African countries (upon request).

For more information please contact us.





# We offer Delivery Services



Same Day Deliveries for Nairobi and next business day for upcountry customers. We also deliver across East Africa

For more information contact us at [sales@bluebellscare.com](mailto:sales@bluebellscare.com)  
or call us directly at +254-733-490941 or 0722879591



## Get in touch today!

**Blue Bells Care Limited**  
Applewood Adams, 3rd Floor, Room 312,  
Adams Arcade Area, Ngong Road  
P.O. Box 28469-00200  
Nairobi, Kenya

Mobile: +254 733 490941  
Office: +254 722 879591

info@bluebellscare.com  
sales@bluebellscare.com



blue bells  
care

hospital & general supplies

*Committed to quality, committed to you!*

[www.bluebellscare.com](http://www.bluebellscare.com)

Connect with us

